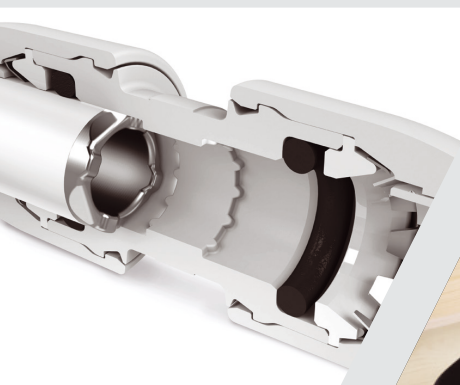


## Hep<sub>2</sub>O

## System Data Sheet



### System description

Hep<sub>2</sub>O® is the professional polybutylene (PB) push-fit plumbing system for hot and cold water and central heating. It offers a fully comprehensive range of white fittings and unique features designed to reduce installation time and improve operating performance:

- In4Sure™ joint recognition
- Secure demounting with the new HepKey™ system
- New SmartSleeve™ for easy pipe insertion.



### System benefits

#### ■ In4Sure joint recognition

In4Sure tells you when the pipe is inserted. Just insert the pipe into the fitting then rotate it. If it's fully inserted you will feel a 'rumbling' sensation, caused by the profiled end of the pipe support sleeve making contact with the castellated seat inside the fitting.

#### ■ New SmartSleeve

The clever design of the SmartSleeve pipe support sleeve reduces the force required to push the pipe into the fitting.

#### ■ New HepKey demounting system

The new HepKey makes demounting quick, easy and tamper-proof, so joints only come apart when you want them to.

#### ■ Highly flexible, white PB pipe

Easily cabled into position and fewer fittings required. With the straight coil technology the pipe stays straight when uncoiled.

#### ■ Compatible with copper pipe

All fittings are compatible with copper pipe – ideal for renovation.

#### ■ Streamlined, white fitting

The white colour combined with a slim, streamlined and altogether more stylish design, means Hep<sub>2</sub>O fittings are well accepted for 'on view' or 'on show' applications.

#### ■ Colour coded packaging

Packaging is colour coded for easy identification: 10mm green, 15mm blue, 22mm red, 28mm orange.

### Documentation

The following documentation on the Hep<sub>2</sub>O system is available:

- Hep<sub>2</sub>O Product List (2013)
- Hep<sub>2</sub>O Installer Guide (2011)

PUSH-FIT PLUMBING SYSTEM

**Solutions for Essentials**



### Applications

Hep2O is suitable for most domestic and commercial plumbing applications: hot and cold water services and heating. In addition to new construction, the extreme flexibility of the Hep2O pipe means it is the ideal solution for renovation, system extensions and situations where space is restricted. This means Hep2O is widely used on mobile homes, portable homes and boats, as well as in traditional residential and commercial plumbing installations. The compatibility of Hep2O fittings with copper ensures a simple, fast and reliable method of joining to traditional materials on site. Hep2O pipe is also the ideal material for use in conduit 'pipe-in-pipe' installations where the combination of pipe flexibility and straight coil technology gives significant advantages for ease of handling compared to other pipe materials.

### Range

The Hep2O range comes with a wide variety of pipes, (dismountable) fittings and manifolds in 10, 15, 22 and 28mm (non-standard sizes on request). Hep2O pipes are available as standard and barrier pipe (incorporating an oxygen barrier to inhibit oxygen permeation). All Hep2O fittings are designed to also connect directly to copper pipework.

| Category               | Product   | Dimensions (mm) |
|------------------------|---|-----------------|
| Pipes                  | <ul style="list-style-type: none"> <li>Coils</li> <li>Straight lengths</li> <li>Conduit pipe</li> <li>Barrier pipe</li> </ul>   | 10,15,22,28     |
| Fittings <sup>1)</sup> | <ul style="list-style-type: none"> <li>Elbows</li> <li>Tees</li> <li>Straight Connectors</li> <li>Spigot reducers</li> <li>Tap connectors</li> <li>Dismountable stop end</li> </ul>                                       | 10,15,22,28     |
| Auxiliary fittings     | <ul style="list-style-type: none"> <li>Brass adaptors (available in DZR and non-DZR brass grades)</li> <li>Valves</li> <li>Tap Connectors</li> </ul>  |                 |
| Manifolds              | <ul style="list-style-type: none"> <li>2-Port</li> <li>3-Port</li> <li>4-Port</li> <li>Modular Multi-Port</li> </ul>  |                 |
| Accessories            | <ul style="list-style-type: none"> <li>Hep2O joint test kit</li> <li>Central heating &amp; water services calculator</li> <li>Pipe support sleeves</li> <li>Cold forming bends</li> <li>Pipe clips and cutters</li> </ul> |                 |

<sup>1)</sup> All fittings are pre-lubricated - no additional lubrication required.

### Quality requirements

Hep2O carries a British Standard Kitemark against BS7291 parts 1 & 2 Class S. Hep2O meets the requirements of EN15876 and is certified by numerous European test laboratories including DVGW, KIWA and AENOR. The system also has approvals in many non-European markets including Australia, New Zealand, South Africa and China.

### Product specifications

#### Raw material pipes

Polybutylene (PB). The middle layer in barrier pipes are made of EVOH.

#### Raw material fittings

Fitting body made of polybutylene. The 'O' ring is made of EPDM. Transition fittings available in either DZR or non-DZR Brass grades.

#### Wall thickness

| Nominal DM (mm) | Wall thickness (mm) |
|-----------------|---------------------|
| 10              | 1.65                |
| 15              | 1.85                |
| 20              | 2.05                |
| 28              | 2.75                |

#### Density kg/m<sup>3</sup>

920

#### Joining method

Push fit.

#### Hot water resistance

95° C short term loading, (max. 6 bar)

#### Maximum permanent operating pressure

12 bar at 20° C

#### Linear expansion PB

0.00013/m/K

#### Thermal conduction PB

0.22 W/mK

#### Pipe roughness

<0,007 mm



### Contact details

Wavin Overseas B.V.  
Stationsplein 3, 8011 CW  
P.O. Box 173, 8000 AD  
Zwolle, The Netherlands  
Phone +31(0)38 - 4294 951  
Fax +31(0)38 - 4294 950  
E-mail: wavin.overseas@wavin.com

[www.wavinoverseas.com](http://www.wavinoverseas.com)